

Current and Former Clients

As of January 2025, current clients are in bold.

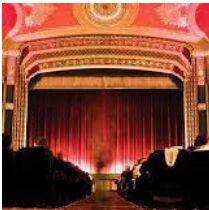
Animal Welfare

Born Free, Silver Spring, MD
 Heartland Animal Shelter, Wheeling, IL
 Michiana Humane Society, Michigan City, IN
 Oshkosh Area Humane Society, Oshkosh, WI
PAWS Chicago (Pets Are Worth Saving), Chicago, IL
 Tree House Animal Foundation, Chicago, IL
 WildiZe Foundation, Aspen, CO
 Wisconsin Humane Society, Milwaukee, WI



Arts and Cultural Institutions

Abraham Lincoln Presidential Library Foundation, Springfield, IL
 Akron Art Museum, Akron, OH
 The American Company of Irish Dance, Milwaukee, WI
 Amon Carter Museum of American Art, Fort Worth, TX
 Atlanta History Center, Atlanta, GA
 Baltimore Museum of Art, Baltimore, MD
 Betty Brinn Children's Museum, Milwaukee, WI
 Beverly Art Center, Chicago, IL
 Boca Raton Museum of Art, Boca Raton, FL
 Boston Youth Symphony Orchestras, Boston, MA
 Botanic Garden Society of Northwest Michigan, Traverse City, MI
 Bowers Museum, Santa Ana, CA
Brooklyn Conservatory of Music, Brooklyn, NY
 Bruce Museum, Greenwich, CT
 Cafeteria Kids Theater, St. Helena, CA
 Canal Corridor Association, LaSalle, IL
 Charles Allis and Villa Terrace Art Museums, Milwaukee, WI
 Chicago Architecture Foundation, Chicago, IL
 Chicago Artists Coalition, Chicago, IL
 Chicago Botanic Garden, Glencoe, IL
 Chicago Creative Reuse Exchange, Chicago, IL
 Chicago DanceMakers Forum, Chicago, IL
 Chicago History Museum, Chicago, IL
 Chicago Jazz Ensemble, Chicago, IL



The Chicago Office of Tourism and Culture, Chicago, IL
 Chicago Opera Theater, Chicago, IL
 Chicago Philharmonic Society, Chicago, IL
 Chicago Shakespeare Theater, Chicago, IL
 The Chicago Symphony Orchestra, Chicago, IL
Children's Discovery Museum Foundation, Normal, IL
 Children's Museum in Oak Lawn, Oak Lawn, IL
 Cleveland Museum of Art, Cleveland, OH
 Cleveland Museum of Natural History, Cleveland, OH
 COCA (Center of Creative Arts), St. Louis, MO
 Court Theatre, Chicago, IL
 Crystal Lake Art Center, Frankfort, MI
 The Detroit Institute of Arts, Detroit, MI
 Dupont Underground, Washington, DC
 Elgin Symphony Orchestra, Elgin, IL
 Elmhurst Art Museum, Elmhurst, IL
 Emile Cohle Art Academy, Los Angeles, CA
 Facets Multimedia, Chicago, IL
 The Field Museum, Chicago, IL
 Friends of the Domes, Milwaukee, WI
 Geneva Foundation for the Arts, Geneva, IL
 Glessner House Museum, Chicago, IL
 Gorton Community Center, Lake Forest, IL
 Grand Traverse Heritage Center, Traverse City, MI
 Harmony Foundation International, Nashville, TN
 Highwood Park Library, Highwood, IL
 Hubbard Street Dance Company, Chicago, IL
 Hyde Park School of Dance, Chicago, IL
 Illinois Symphony Orchestra, Springfield, IL
 International Peace Garden, Dunseith, ND
 Iowa Transportation Museum, Grinnell, IA
 The Joffrey Ballet, Chicago, IL
 John Michael Kohler Arts Center, Sheboygan, WI
 KidZone Museum, Truckee, CA
 Lake Bluff Public Library, Lake Bluff, IL
 Lake Forest Symphony Association, Lake Forest, IL

CURRENT AND FORMER CLIENTS

Lakeview Museum of Arts and Sciences, Peoria, IL
Landmarks Illinois, Chicago, IL
Lincoln Park Zoo, Chicago, IL
The Jack and Shirley Lubeznik Center for the Arts, Michigan City, IN
Lookingglass Theatre Company, Chicago, IL
Loyola University Museum of Art (LUMA)
Lyric Opera of Chicago, Chicago, IL
McLean County Arts Center, Bloomington, IL
McLean County Historical Society, Bloomington, IL
Miami City Ballet, Miami Beach, FL
Mills House Community Association, Benzonia, MI
Milwaukee Art Museum, Milwaukee, WI
Milwaukee Film, Milwaukee, WI
Milwaukee Repertory Theater, Milwaukee, WI
Milwaukee Symphony Orchestra, Milwaukee, WI
Minnesota Zoo Foundation, Apple Valley, MN
Monterey Museum of Art, Monterey, CA
Monthaven Arts and Cultural Center, Hendersonville, TN
Museum of Contemporary Art, Chicago, IL
Museum of Nebraska Art, Kearney, NE
Museum of Ventura County, Ventura, CA
National Museum of Mexican Art, Chicago, IL
National Public Housing Museum, Chicago, IL
The National Time Museum, Chicago, IL
Newberry Library, Chicago, IL
The New World Symphony, Miami Beach, FL
Northlight Theatre, Skokie, IL
Open Studio, Evanston, IL
Peggy Notebaert Nature Museum, Chicago, IL
Poetry Foundation, Chicago, IL
Porchlight Music Theatre, Chicago, IL
Project 120 Chicago, Chicago, IL
Rapid City Arts Council, Rapid City, SD
Ravinia Music Festival, Highland Park, IL
The Renaissance Society, Chicago, IL
Renaissance Theaterworks, Milwaukee, WI
Royal Botanic Gardens, Kew, London, England
Saint Louis Art Museum, St. Louis, MO
St. Louis Science Center, St. Louis, MO
San Antonio Museum of Art, San Antonio, TX
Science and Technology Museum of Atlanta, Atlanta, GA
The Science Museum, London, England



Sherwood Community Music School at Columbia College Chicago, Chicago, IL
Skylight Music Theatre, Milwaukee, WI
St. Louis Symphony Orchestra, St. Louis, MO
Suburban Fine Arts Center, Highland Park, IL
Swope Art Museum, Terre Haute, IN
Theodore Roosevelt Presidential Library Foundation, Dickinson, ND
TimeLine Theater Company, Chicago, IL
Traverse Symphony Orchestra, Traverse City, MI
Unity Temple, Oak Park, IL
War Memorial Center, Milwaukee, WI
Wisconsin Conservatory of Music, Milwaukee, WI
Witte Museum, San Antonio, TX
Wonderlab, Bloomington, IN
Zoo Atlanta, Atlanta, GA

Economic Development

IFF, Chicago, IL

Education-Related Organizations

ASIANetwork, Rock Island, IL
Big Shoulders Fund, Chicago, IL
Carole Robertson Center for Learning, Chicago, IL
Chapin Hall at the University of Chicago, Chicago, IL
Chicago Literacy Alliance, Chicago, IL
Chicago Lutheran Educational Foundation, Chicago, IL
Children's Literacy Foundation (CLiF), Waterbury Center, VT
Civic Consulting Alliance, Chicago, IL
DePaul College Preparatory, Chicago, IL
Edessa School of Fashion, Milwaukee, WI
Evanston Township High School, Evanston, IL
Institute of Play, New York, NY
Genetics and Public Policy Center, Washington, D.C
Global Citizens Network, Minneapolis, MN
Golden Apple Foundation, Chicago, IL
Forging Industry Educational Research Foundation, Cleveland, OH
Foundation for Independent Higher Education, Chicago, IL
IES Abroad, Chicago, IL
Illinois Action for Children, Chicago, IL
Illinois Campus Compact, Chicago, IL
Illinois Performance Excellence, Peoria, IL

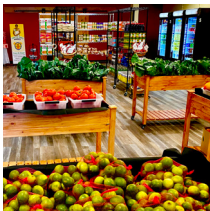
CURRENT AND FORMER CLIENTS



Kids First Chicago, Chicago, IL
Lake County Partners, Lincolnshire, IL
Leadership Academy and Urban Network for Chicago (LAUNCH), Chicago, IL
Leadership Greater Chicago, Chicago, IL
LINK Unlimited, Chicago, IL
Morgan Park Academy, Chicago, IL
National Faculty, Atlanta, GA
National Guild for Community Arts Education, New York, NY

New Trier Educational Foundation, Northfield, IL

Nicolet High School, Glendale, WI
Oakland School for the Arts, Oakland, CA
Puente Learning Center, Los Angeles, CA
Reading in Motion, Chicago, IL
Shorewood School District, Shorewood, WI
St. Francis High School, Wheaton, IL
The Thinking Project, Denver, CO
Three Pillars Initiative, Oak Park, IL
Waukegan to College, Waukegan, IL
We Tell Stories, Los Angeles, CA



The Environment

Azimuth World Foundation, Bismarck, ND
Clean Wisconsin, Madison, WI
Cofan Survival Fund, Quito, Ecuador
Delta Institute, Chicago, IL
Environmental Law and Policy Center, Chicago, IL
Environmental Research Foundation, Lincolnwood, IL

Friends of Lakeshore State Park, Milwaukee, WI

Ice Age Park & Trail Foundation, Madison, WI
Irons Oaks Foundation, Olympia Fields, IL
Lincoln Park Conservancy, Chicago, IL
National Park Service, Omaha, NE
Openlands, Chicago, IL
Parkland Foundation, Normal, IL
Pheasants Forever, Saint Paul, MN
Point Betsie Lighthouse (Friends of), Frankfort, MI
Preservation Foundation of the Lake County Forest Preserves, Lake County, IL
Save the Dunes, Michigan City, IN
Taltree Arboretum and Gardens Foundation, Valparaiso, IN
Trust for Public Land, Chicago, IL



Urban Ecology Center, Milwaukee, WI
The Wetlands Initiative, Chicago, IL

Faith-Based Organizations

Angel's Fund Committee of Second Presbyterian Church, Chicago, IL
Beth Emet The Free Synagogue, Evanston, IL
Faith Community Church, Franklin, WI
First Presbyterian Church of Ann Arbor, Ann Arbor, MI
First Unitarian Society of Madison, Madison, WI
Friends of Historic Second Church, Chicago, IL
Goldman Union Camp Institute, Zionsville, IN
JCC of St. Louis, St. Louis, MO
Jewish Community Board of Akron, Akron, OH
Lake Street Church, Evanston, IL
Lee Church Congregational, U.C.C., Lee, NH

Lutheran Church Charities, Northbrook, IL

Oak Park Temple, Oak Park, IL
Old St. Mary's, Chicago, IL
Presbytery of Chicago, Chicago, IL
Protestants for the Common Good, Chicago, IL
St. Edmund Parish, Oak Park, IL
Saint James Catholic Church, Chicago, IL
Sisters of St. Joseph of La Grange, La Grange, IL
St. Barnabas Parish, Chicago, IL
Winnetka Congregational Church, Winnetka, IL

Foundations

BitGive Foundation, Truckee, CA
Clearwater Camp Foundation, Minocqua, WI
Crossroads Fund, Chicago, IL
The Richard H. Driehaus Foundation, Chicago, IL
Evanston Community Foundation, Evanston, IL
Driskill Foundation, Naperville, IL
Gateway Foundation, Chicago, IL
Grand Traverse Regional Community Foundation, Traverse City, MI
The Lloyd A. Fry Foundation, Chicago, IL
Norwegian American Hospital Foundation, Chicago, IL
Oak Park River Forest High School Scholarship Foundation, Oak Park, IL
Tate Family Foundation, Fox Point, WI

CURRENT AND FORMER CLIENTS

Governmental Organizations

City of Aurora, Aurora, IL

Healthcare and Health-Related Organizations



Access Community Health Network, Chicago, IL
Alisa Ann Ruch Burn Foundation, El Cerrito, CA
American Orthopaedic Foot & Ankle Society, Rosemont, IL
Access Community Health Network, Chicago, IL
Advocate Charitable Foundation, Park Ridge, IL
Alexian Brothers Bonaventure House, Elk Grove Village, IL
Alexian Brothers Health System Foundation, Chicago, IL
Allen Institute for Brain Research, Seattle, WA
Alzheimer's Association National Headquarters, Chicago, IL
American Brain Tumor Association, Des Plaines, IL
American Heart Association Greater Midwest Affiliate, Chicago, IL
Batten Disease Support & Research Association, Columbus, OH
BloodCenter of Wisconsin, Milwaukee, WI
Cancer Wellness Center, Northbrook, IL
Cathedral Counseling Center, Chicago, IL
Chicago Health Policy Research Council, Chicago, IL
Children's Oncology Services, Inc., Chicago, IL
Doheny Eye Institute, Los Angeles, CA
Evanston Northwestern Healthcare, Evanston, IL
Foundation for Women's Cancer, Chicago, IL
Froedtert Hospital, Milwaukee, WI
Gaia Home, Bismarck, ND
Gigi's Playhouse, Hoffman Estates, IL
Gilda's Club Chicago, Chicago, IL
Hadley Institute for the Blind and Visually Impaired, Winnetka, IL
Health for Humanity, Wilmette, IL
HealthReach, Waukegan, IL
Health Vision Midwest, Gary, IN
Kidney Cancer Association, Evanston, IL
La Rabida Children's Hospital, Chicago, IL
Little Company of Mary Hospital, Evergreen Park, IL
Loyola University Health System, Maywood, IL
Medical College of Wisconsin, Milwaukee, WI
Mercy and Unity Hospitals Foundation, Fridley, MN



Milwaukee Health Care Partnership, Milwaukee, WI
Multidisciplinary Association for Psychedelic Studies, San Jose, CA
National Investment Center for the Seniors Housing and Care Industry, Annapolis, MD
National Multiple Sclerosis Society Wisconsin Chapter, Hartland, WI
National PKU Alliance, Tomahawk, WI
NewAldaya Lifescapes, Cedar Falls, IA
Oak Park River Forest Infant Welfare Society, Oak Park, IL
OMS Foundation, Rosemont, IL
One World Surgery, Deerfield, IL
Pillars Community Health, LaGrange Park, IL
Planned Parenthood of Illinois, Chicago, IL
Planned Parenthood of Wisconsin, Milwaukee, WI
Plymouth Place Senior Living, La Grange Park, IL
Rehabilitation Institute of Chicago, Chicago, IL
Resurrection Development Foundation, Des Plaines, IL
Rush North Shore Medical Center, Skokie, IL
Rush NeuroBehavioral Center, Skokie, IL
Rush University Medical Center, Chicago, IL
Rush University Medical Center Woman's Board, Chicago, IL
Sinai Health System, Chicago, IL
Society of Toxicology, Reston, VA
South Fulton Medical Center, Atlanta, GA
Swedish Covenant Hospital, Chicago, IL
U Mass Medical Center, Worcester, MA
University of North Texas Health Science Center, Fort Worth, TX
Wilson Research Foundation, Jackson, MS

Higher Education

Abilene Christian University, Abilene, TX
Alverno College, Milwaukee, WI
Angelo State University, San Angelo, TX
Archeworks, Chicago, IL
Augustana College, Rock Island, IL
Aurora University, Aurora, IL
Austin College, Sherman, TX
Austin Presbyterian Theological Seminary, Austin, TX
Beloit College, Beloit, WI
California State University, Fullerton, CA

CURRENT AND FORMER CLIENTS



Cardinal Stritch University, Milwaukee, WI
Carroll University, Waukesha, WI
Chicago School of Professional Psychology, Chicago, IL
Claremont McKenna College, Claremont, CA
Claremont School of Theology, Claremont, CA
College of Lake County, Grayslake, IL
Columbia College Chicago, Chicago, IL
Columbia College of Missouri, Columbia, MO
Columbia College of Nursing/Columbia Foundation, Milwaukee, WI
Concordia College of New York, Bronxville, NY
Concordia University, River Forest, IL
DePaul University, Chicago, IL
Des Moines University, Des Moines, IA
Dominican University, River Forest, IL
Dr. William M. Scholl College of Podiatric Medicine at Rosalind Franklin University, North Chicago, IL
East-West University, Chicago, IL
Erikson Institute, Chicago, IL
Governors State University, University Park, IL
Harper College, Palatine, IL
Illinois Institute of Technology, Chicago, IL
Indiana State University, Terre Haute, IN
Institute for Clinical Social Work, Chicago, IL
Institute of Design, Illinois Institute of Technology, Chicago, IL
John Marshall Law School, Chicago, IL
Kalamazoo College, Kalamazoo, MI
Kendall College, Evanston, IL
Landmark College, Putney, VT
Lewis University, Romeoville, IL
Loyola University Chicago, Chicago, IL
Loyola University Health Sciences Division, Chicago, IL
Loyola University Quinlan School of Business, Chicago, IL
Macalester College, St. Paul, MN
Marian University, Fond du Lac, WI
Maurer School of Law, Indiana University, Bloomington, IN
McCormick Theological Seminary, Chicago, IL
McHenry County College, Crystal Lake, IL
Midwestern University, Downers Grove, IL
Milwaukee Institute of Art and Design, Milwaukee, WI
Missouri Western State University, St Joseph, MO
Monmouth College, Monmouth, IL
Neumann University, Aston, PA



North Park University, Chicago, IL
Northeastern University, Boston, MA
Northern Illinois University, DeKalb, IL
Northland College, Ashland, WI
Oakton College Educational Foundation, Des Plaines, IL
Princeton Theological Seminary, Princeton, NJ
Purdue University Calumet, Hammond, IN
Rhode Island School of Design, Providence, RI
Roosevelt University, Chicago, IL
Rosalind Franklin University, North Chicago, IL
Saint Louis University, St. Louis, MO
Saint Mary's College, Notre Dame, IN
Saint Xavier University, Chicago, IL
Silver Lake College, Manitowoc, WI
St. Ambrose University, Davenport, IA
Texas Wesleyan University, Fort Worth, TX
Trinity International University, Deerfield, IL
University of Detroit Mercy, Detroit, MI
University of Illinois at Chicago, Chicago, IL
University of New Mexico, Albuquerque, NM
University of Wisconsin, Madison, WI
University of Wisconsin Foundation, School of Education, Madison, WI
University of Wisconsin-Milwaukee, Peck School of the Arts, Milwaukee, WI
University of Wisconsin-Parkside, Kenosha, WI
Valparaiso University, Valparaiso, IN
VanderCook College of Music, Chicago, IL
Vermont College of Fine Arts, Montpelier, VT

Human Services

Access Living of Metropolitan Chicago, Chicago, IL
AIDSCARE, Chicago, IL
AIDS Foundation of Chicago, Chicago, IL
Alternatives, Inc., Chicago, IL
Apna Ghar, Chicago, IL
Art Resources in Teaching, Chicago, IL
Aspire, Chicago, IL
Association House of Chicago, Chicago, IL
BUILD, Inc., Chicago, IL
Camp Soaring Eagle Foundation, Scottsdale, AZ
CARE, Atlanta, GA
Casa Central, Chicago, IL

CURRENT AND FORMER CLIENTS

Cathedral Center, Milwaukee, WI

CEDA Northwest, Mt. Prospect, IL
Center for Economic Progress, Chicago, IL
Center on Halsted, Chicago, IL
Center for Neighborhood Technology, Chicago, IL

Centers for Independence, Milwaukee, WI

Centro Romero, Chicago, IL
Changing Perspectives, Inc., Bradford, VT
Chicago Alliance for Neighborhood Safety, Chicago, IL
Chicago Commons, Chicago, IL
Chicago Lighthouse, Chicago, IL
Chicago Lights, Chicago, IL
Chicago Maternity Center, Chicago, IL
Child and Family Services of Northwestern Michigan, Traverse City, MI

Chinese American Service League, Chicago, IL

Community Support Services, Brookfield, IL

The Cradle, Evanston, IL

Easterseals, Chicago, IL

Experimental Station, Chicago, IL

The Family Institute at Northwestern University, Evanston, IL

Feeding Tomorrow, Chicago, IL

Feeding America Eastern Wisconsin, Milwaukee, WI

Food for Free, Cambridge, MA

Friends of Be an Angel USA, Mequon, WI

Greater West Town Development Project, Chicago, IL

Greater Wheeling Area Youth Outreach, Mount Prospect, IL

Guild for the Blind, Chicago, IL

Habitat for Humanity of Northern Fox Valley, Elgin, IL

Hebron House of Hospitality, Waukesha, WI

Hephzibah Children's Association, Oak Park, IL

Howard Area Community Center, Chicago, IL

Illinois Coalition for Immigrant and Refugee Rights, Chicago, IL

Jane Addams Juvenile Court Foundation, Evanston, IL

Kaleidoscope, Inc., Chicago, IL

Kids First Chicago, Chicago, IL

Lambs Farm, Libertyville, IL

Lawrence Hall Youth Services, Inc., Chicago, IL

Little City Foundation, Palatine, IL

Lutheran Social Services of Illinois, Palatine, IL

Marklund, Geneva, IL

Meals On Wheels Foundation of Northern Illinois, Berwyn, IL

Mercy Housing, Milwaukee, WI

Neighborhood Housing Services of Chicago, Chicago, IL

New Moms, Chicago, IL

North Carolina Partnership for Children, Raleigh, NC

Northfield Township Food Pantry, Northfield, IL

One Hope United, Chicago, IL

The Opportunity Center, Glendale, WI

Ounce of Prevention Fund, Chicago, IL

Our Children's Homestead, Naperville, IL

Over The Rainbow Association, Evanston, IL

Paraquad, St. Louis, MO

Preterm, Cleveland, OH

Repairers of the Breach, Milwaukee, WI

Skills for Chicagoland's Future, Chicago, IL

Sojourner Family Peace Center, Milwaukee, WI

St. Vincent de Paul Center, Chicago, IL

Special Olympics Illinois, Normal, IL

Thrive Counseling Center, Oak Park, IL

Treatment Alternatives for Safe Communities, Chicago, IL

Vera Court Neighborhood Center, Madison, WI

Wellpoint Care Network, Milwaukee, WI

Youth Job Center, Evanston, IL

Y.O.U. (Youth Organizations Umbrella), Evanston, IL



Independent Schools

Akiba-Schechter Jewish Day School, Chicago, IL

Baker Demonstration School, Wilmette, IL

Berkeley-Carroll School, Brooklyn, NY

Carden Arbor View School, Upland, CA

Catherine Cook School, Chicago, IL

Catholic Memorial High School, Waukesha, WI

Chiaravalle School, Evanston, IL

Chicago Tech Academy, Chicago, IL

Crisis Center for South Suburbia, Tinley Park, IL

Crossroads College Preparatory School, St. Louis, MO

De La Salle Institute, Chicago, IL

DePaul College Prep, Chicago, IL

Glenwood Academy, Glenwood, IL

Elgin Academy, Elgin, IL

Fenwick High School, Oak Park, IL

CURRENT AND FORMER CLIENTS



The Feltre School, Chicago, IL
Forest Ridge Academy, Schererville, IN
The Harley School, Rochester, NY
Intercultural Montessori Language School, Oak Park, IL
Lake Forest Academy, Lake Forest, IL
Marquette University High School, Milwaukee, WI
Milwaukee Collegiate Academy, Milwaukee, WI
Morgan Park Academy, Chicago, IL
Francis W. Parker School, Chicago, IL
Piney Woods School, Jackson, MS
Quest Academy, Palatine, IL
Saint Catherine's High School, Racine, WI
San Miguel Schools, Chicago, IL
Shady Side Academy, Pittsburgh, PA
University of Chicago Laboratory Schools, Chicago, IL
University School of Milwaukee, Milwaukee, WI

Organizations and Associations

ACLU Foundation, New York, NY
American Academy of Pediatrics, Elk Grove Village, IL
American Association of Law Libraries, Chicago, IL
American Association of Nurse Anesthetists, Park Ridge, IL
American Society of Retina Specialists, Chicago, IL
Armed Services of YMCA Alaska, Anchorage, AK
Associated Colleges of Illinois, Chicago, IL
American Council on Consumer Interests, Belleair Bluffs, FL
Boys and Girls Clubs of Grand Traverse, Traverse City, MI
Brewers Community Foundation, Milwaukee, WI
Center for Tax and Budget Accountability, Chicago, IL
Commercial Food Equipment Service Association), Fort Mill, SC
Chicago District Golf Association Foundation, Oak Brook, IL
Family Farmed, Chicago, IL
Girl Scouts of Greater Chicago and Northwest Indiana, Chicago, IL
The HistoryMakers, Chicago, IL
International Essential Tremor Foundation, Kansas City, MO
Midwest High Speed Rail Association, Chicago, IL
National Fluid Power Association, Milwaukee, WI
Northern Suburb Special Recreation Association, Northbrook, IL
Risk Management Association, Philadelphia, PA
Rotary Club of Milwaukee, Milwaukee, WI



SRI International, Menlo Park, CA
Western Golf Association/Evans Scholars Foundation, Golf, IL
Wisconsin Policy Research Institute, Milwaukee, WI
Women's Fund of Greater Milwaukee, Milwaukee, WI
YMCA of Metropolitan Chicago, Chicago, IL
YMCA of Metropolitan Washington, Washington, DC
YMCA of the USA, Chicago, IL

Peace and Security

Bulletin of Atomic Scientists, Chicago, IL
Interfaith Youth Core, Chicago, IL

Public Broadcasting

Arkansas Educational Television, Conway, AR
Corporation for Public Broadcasting, Washington, DC
Detroit Public Television, Detroit, MI
The Development Exchange, Inc, Minneapolis, MN
Iowa Public Television, Johnston, IA
KCPT, Kansas City, MO
KJZZ, Phoenix, AZ
KLRN, San Antonio, TX
KNPB, Reno, NV
WTMD, Towson, MD
KRMA, Denver, CO
KUAC, Fairbanks, AK
MPTV Friends, Milwaukee, WI
Native Public Media, Flagstaff, AZ
Nebraska ETV Network, Lincoln, NE
Rocky Mountain PBS, Denver, CO
SDPB—South Dakota Public Broadcasting, Vermillion, SD
WCMU, Mount Pleasant, MI
WFYI, Indianapolis, IN
WKAR, Lansing, MI
WNIN, Evansville, IN
WNIT, Elkhart, IN
WNPT, Nashville, TN
WPBA, Atlanta, GA
WQPT, Moline, IL
Window to the World Communications, Inc., Chicago, IL
WTMD, Towson, MD
WTVP, Peoria, IL
WYES, New Orleans, LA